

工程成本進度

| 工程名稱 | 正覺寺玄奘文化宗教園區開發案 |
|-----------------|----------------------|
| 開工日期 | 112年07月21日 |
| 預定完工日期 | 115年10月03日 |
| 施工工期 | 1171日曆天 |
| 累計工期 | 434日曆天（截至113年09月26日） |
| 剩餘工期 | 737日曆天 |
| 預定進度(113.09.26) | 21.88% |
| 實際進度(113.09.26) | 20.62% |
| 本週進度(超前/落後) | 1.26% |



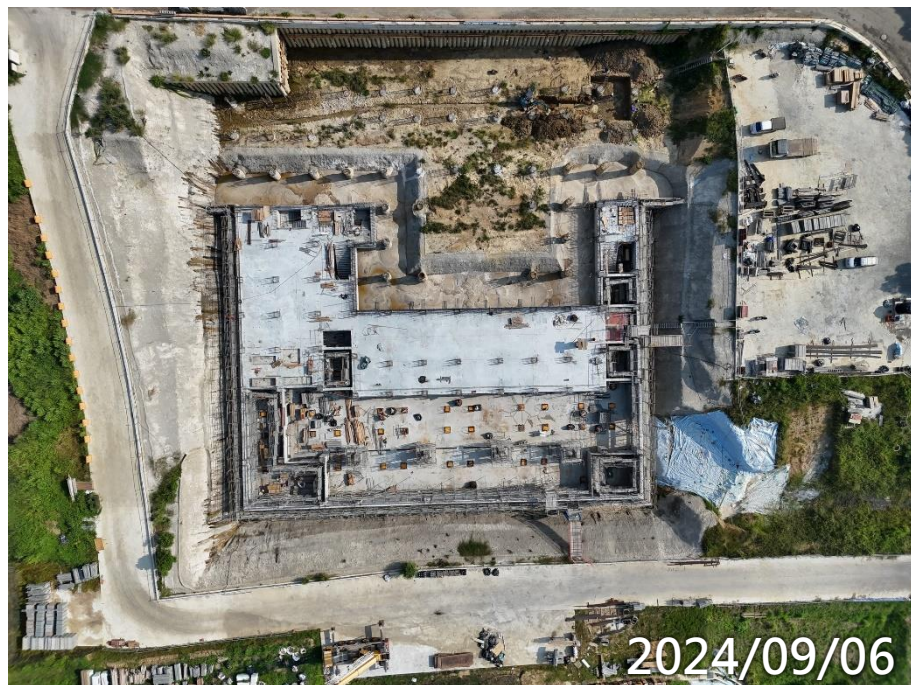
正覺寺玄奘文化宗教園區開發案全景



正覺寺玄奘文化宗教園區開發案全景

正覺寺玄奘文化宗教園區開發案

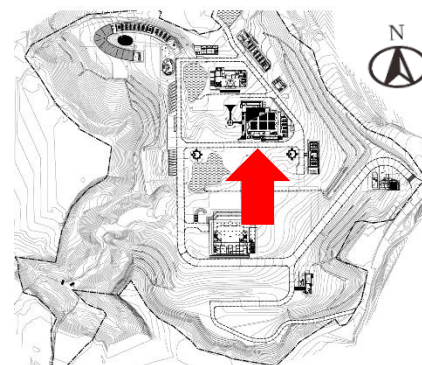
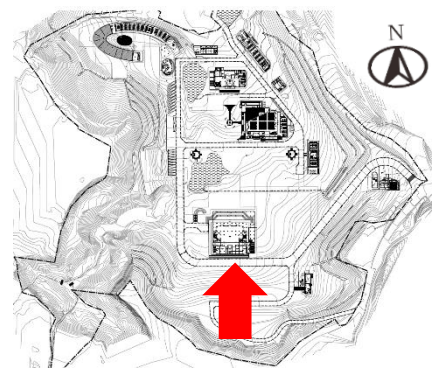
施工照片



主殿



齋堂

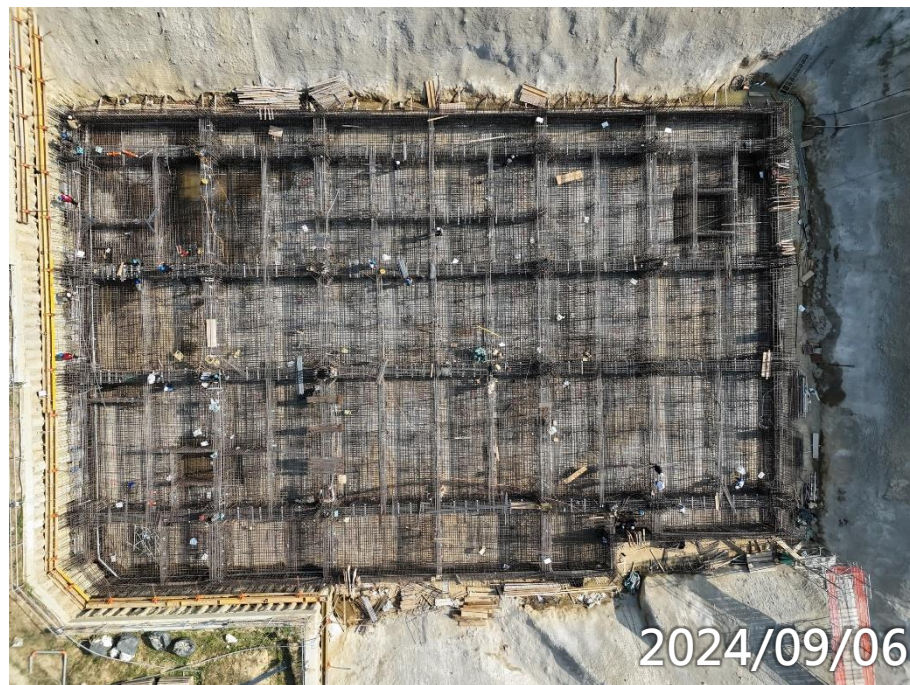


正覺寺玄奘文化宗教園區開發案

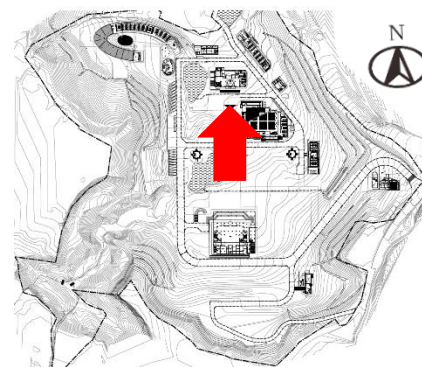
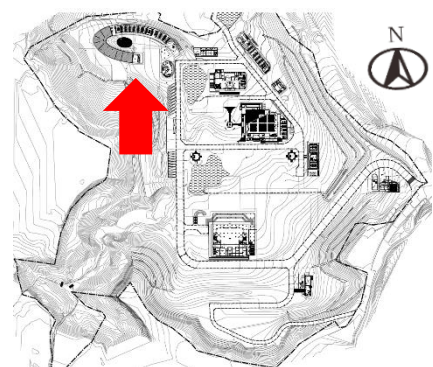
施工照片

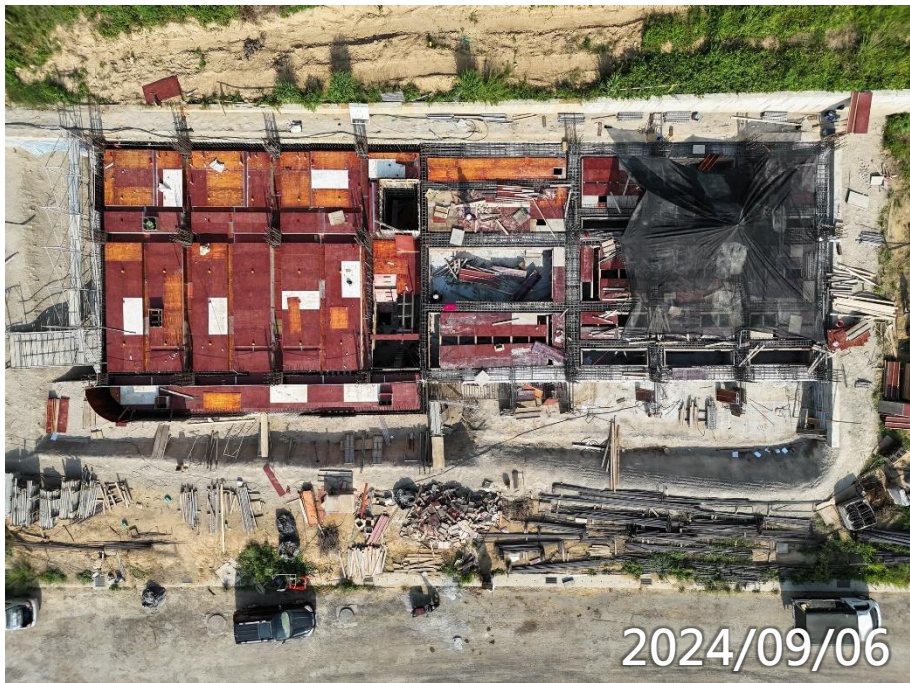


女寮



玄文

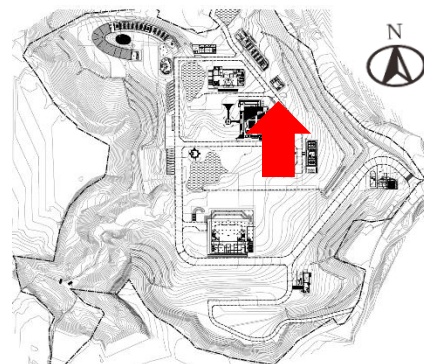
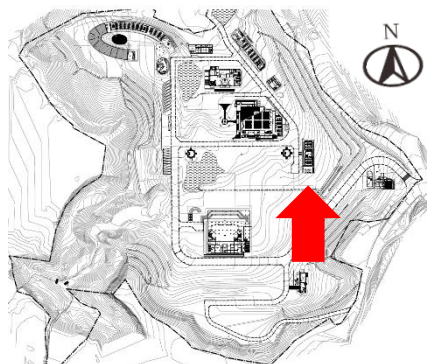




男義工



男常住



正覺寺玄奘文化宗教園區開發案

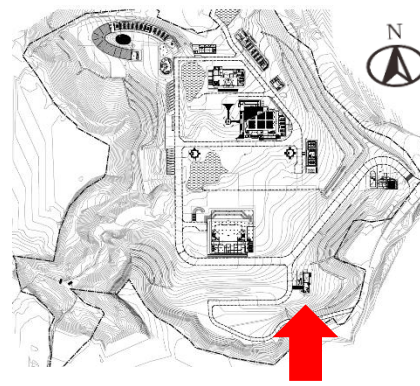
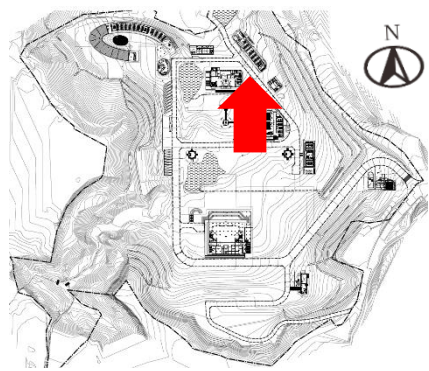
施工照片



男寮

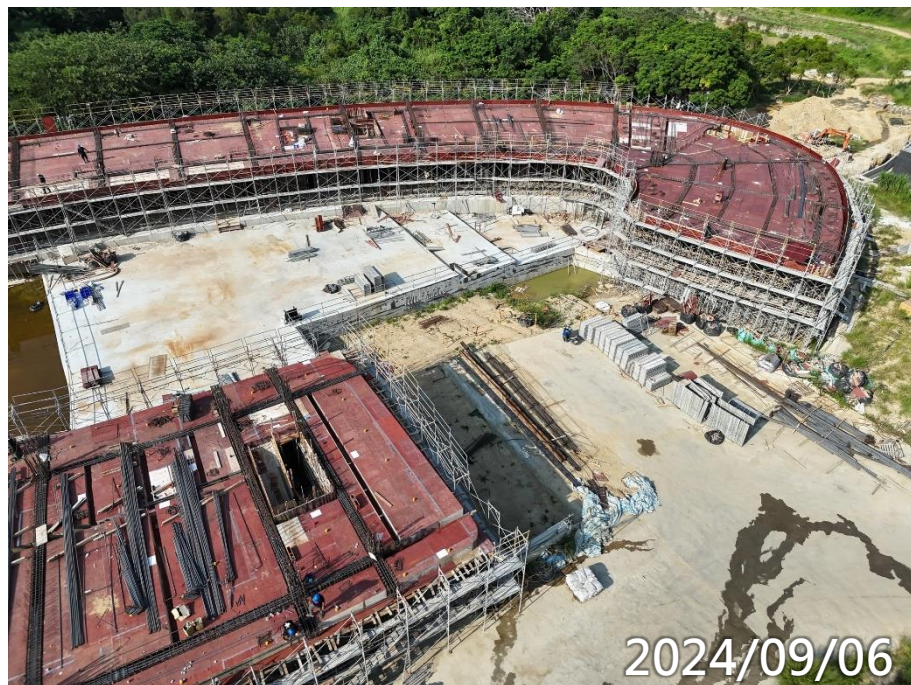


司機休息室

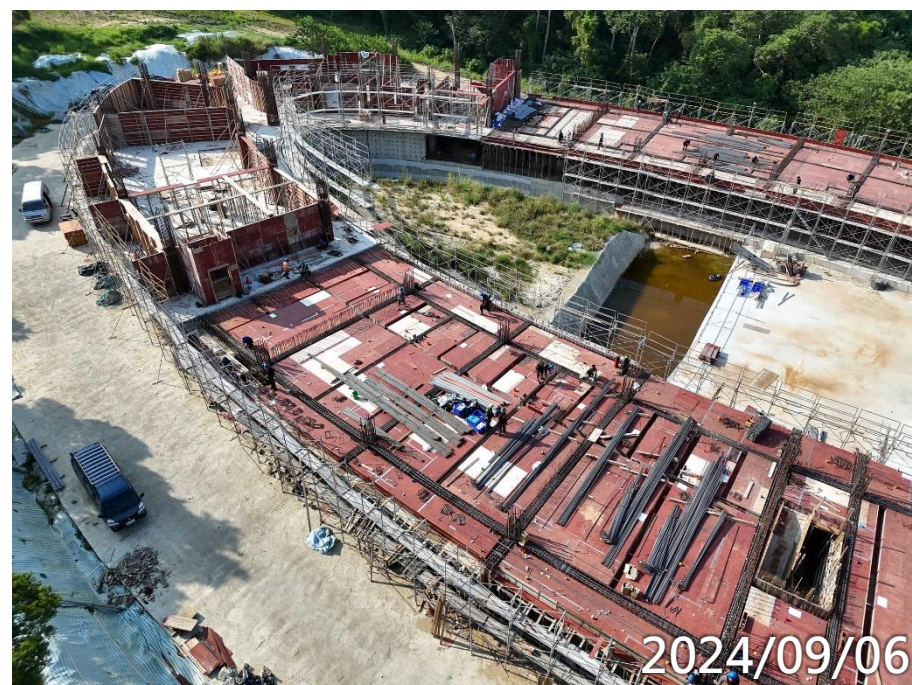


正覺寺玄奘文化宗教園區開發案

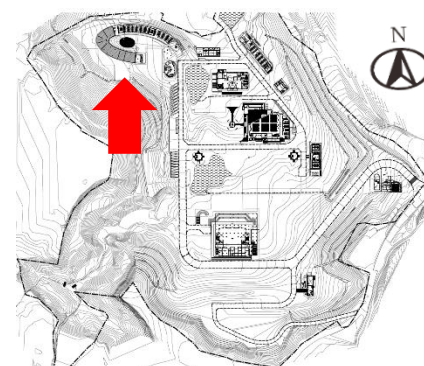
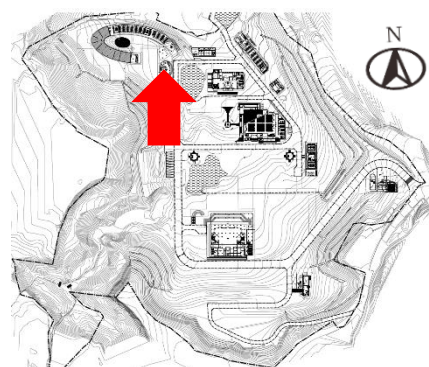
施工照片



女寮1、3區2F梁版鋼筋模板水電施作

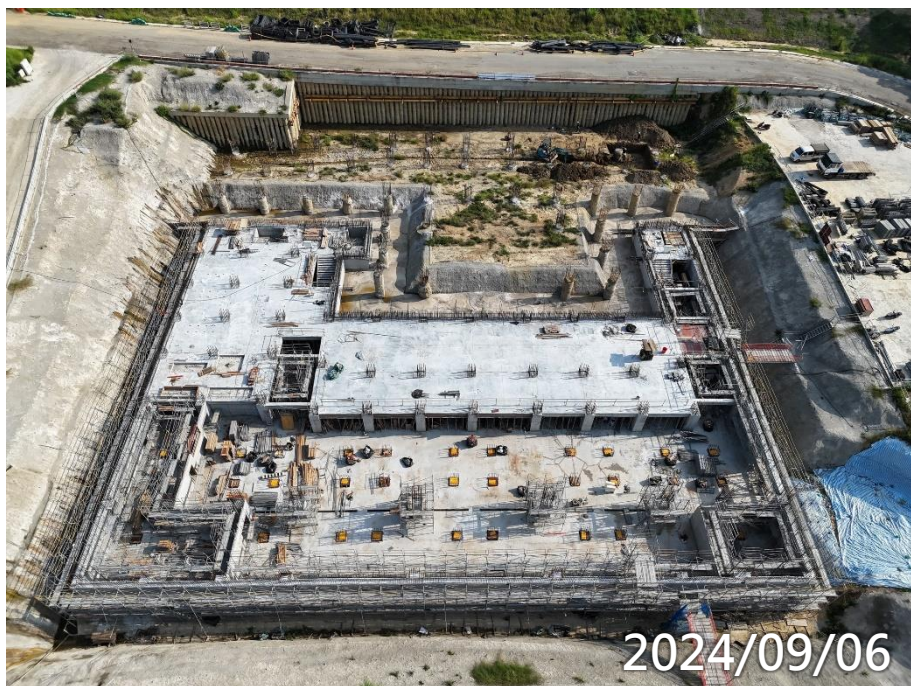


女寮2區2F柱牆鋼筋模板水電施作



正覺寺玄奘文化宗教園區開發案

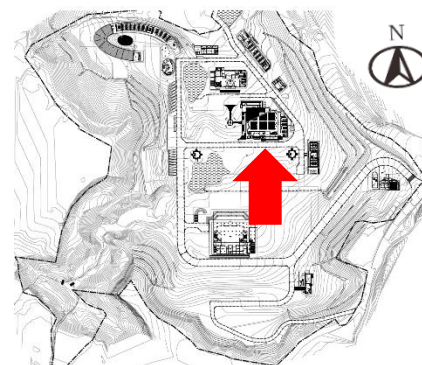
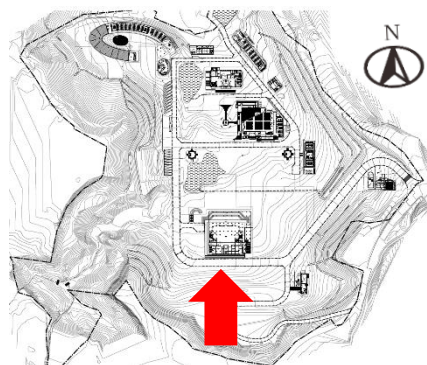
施工照片



主殿高低版交界回填、高版接地施作



齋堂基礎層鋼筋水電放樣

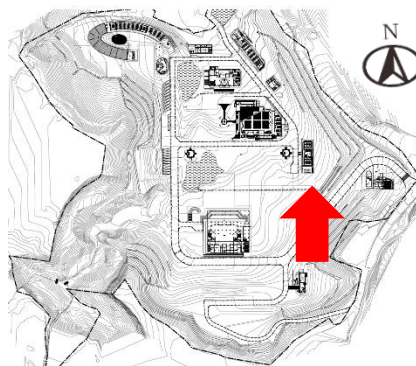
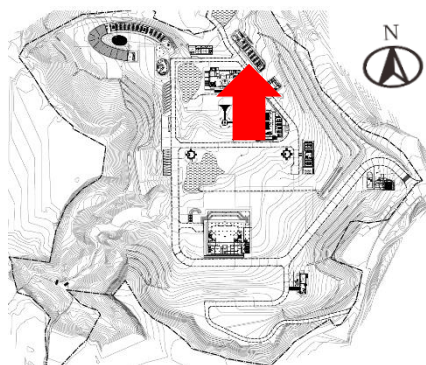




男寮地錨、第二階土方開挖



男義工低版區B1F、高版區地梁
鋼筋模板水電施作

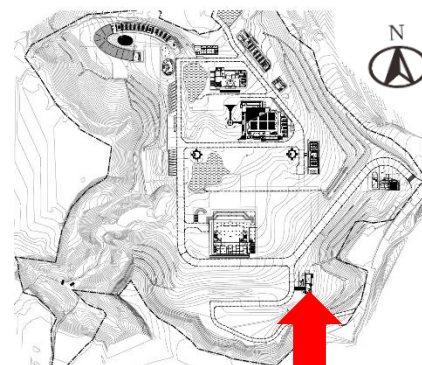
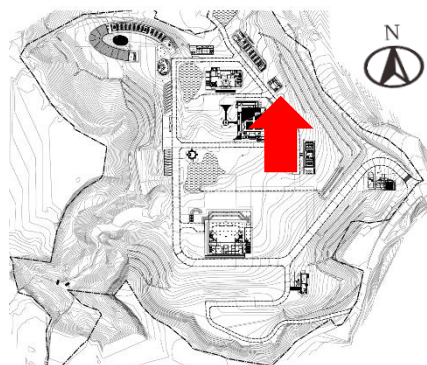




男常住鋼軌樁拆除、土方回填



司機休息室鋼筋水電放樣



正覺寺玄奘文化宗教園區開發案

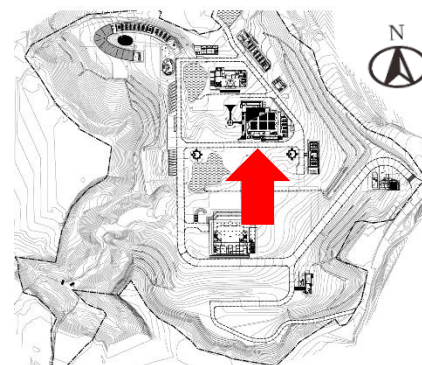
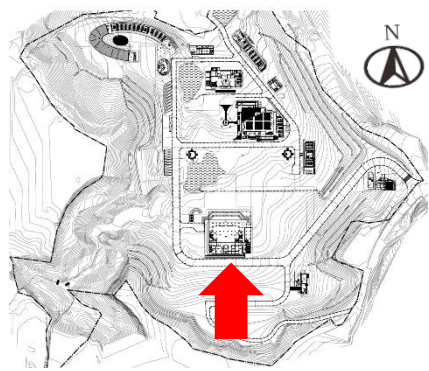
施工照片



主殿



齋堂



正覺寺玄奘文化宗教園區開發案

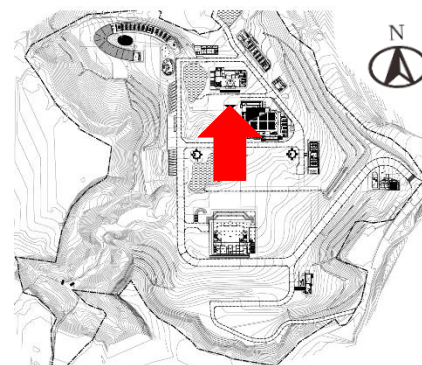
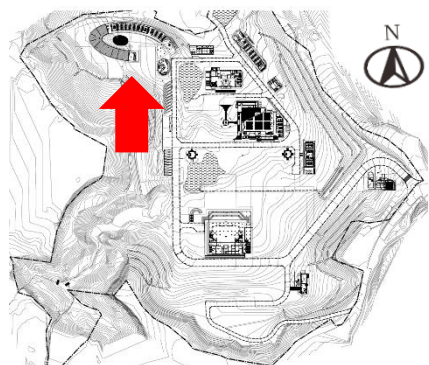
施工照片



女寮



玄文

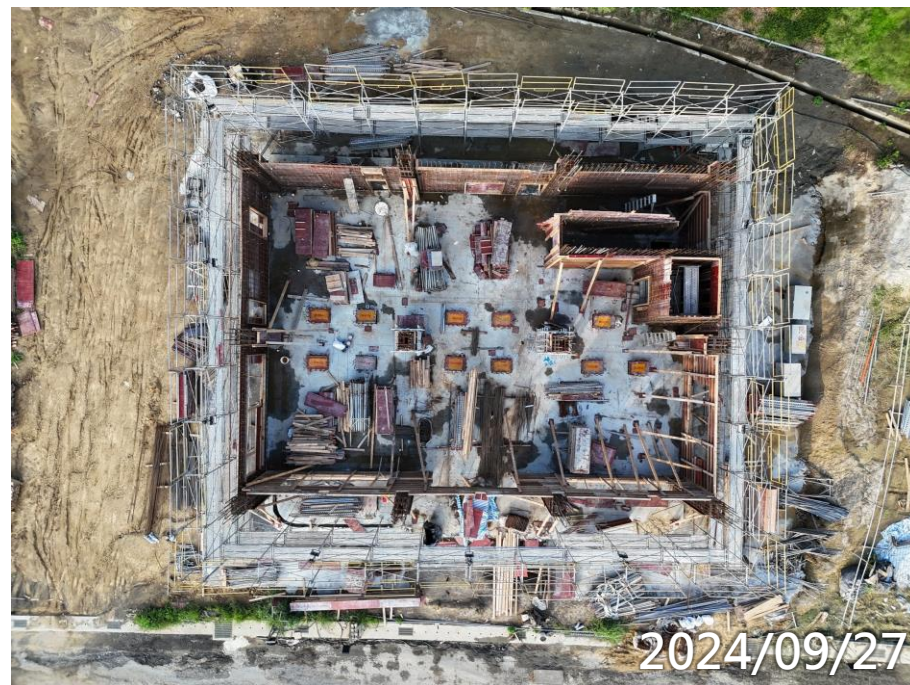


正覺寺玄奘文化宗教園區開發案

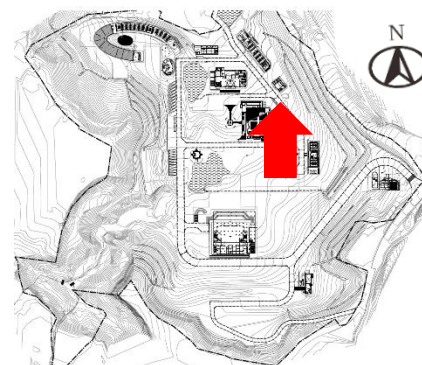
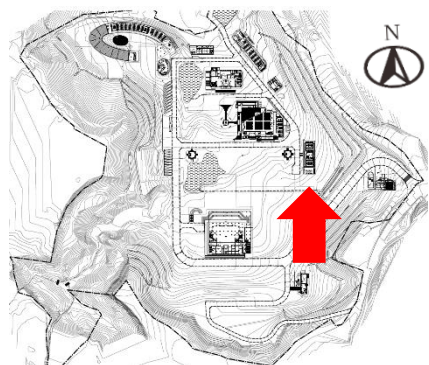
施工照片



男義工



男常住

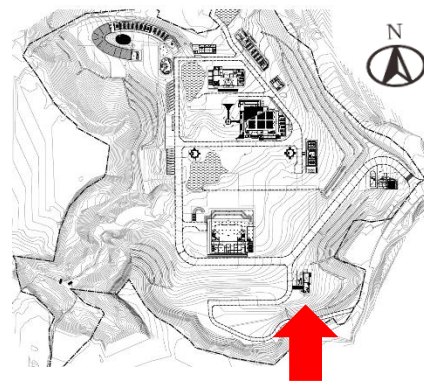
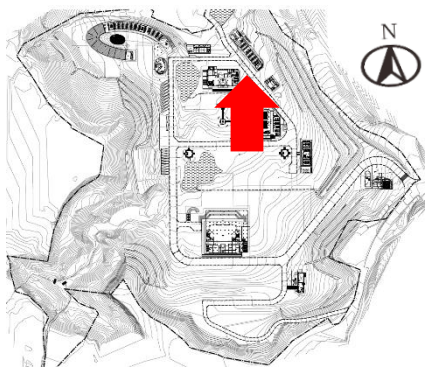




男寮



司機休息室



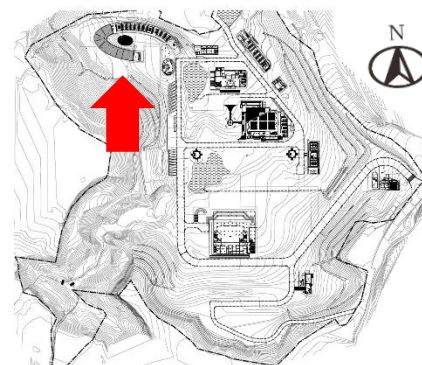
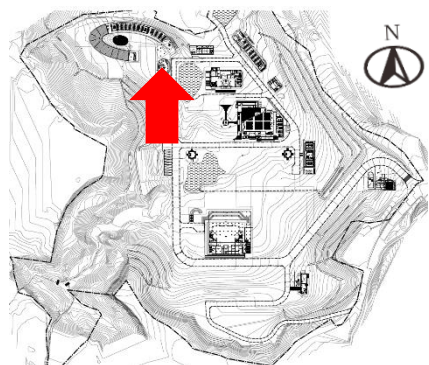
正覺寺玄奘文化宗教園區開發案

施工照片



女寮1、3區2F柱牆鋼筋模板水電施作

女寮2區2F柱牆鋼筋模板水電施作



正覺寺玄奘文化宗教園區開發案

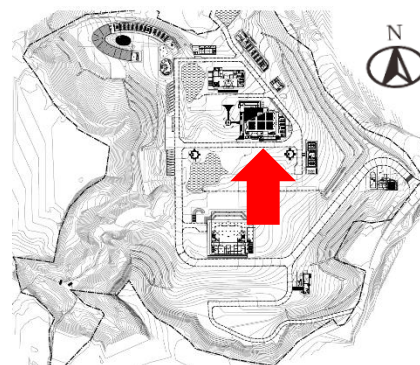
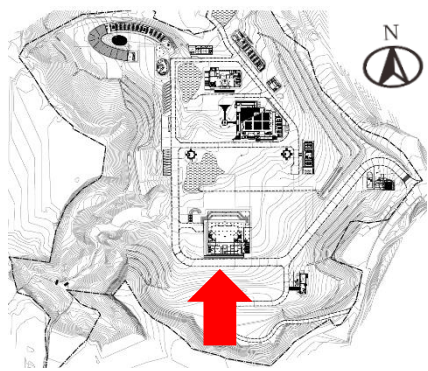
施工照片



主殿高版CLSM回填、樁頭劣質打除



齋堂基礎層鋼筋綁紮

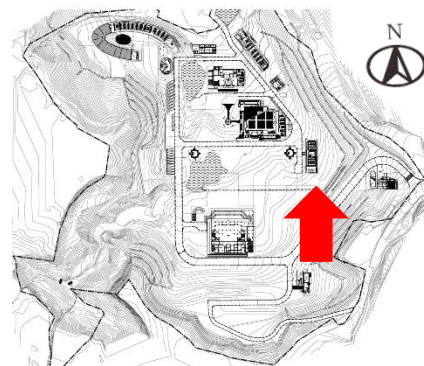
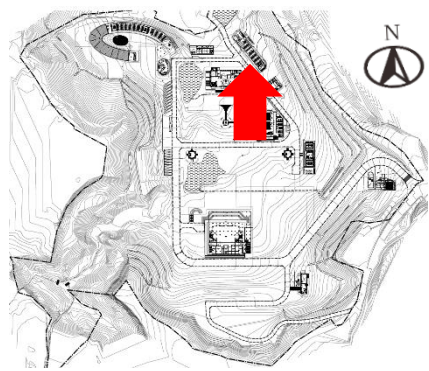




男寮土方細整

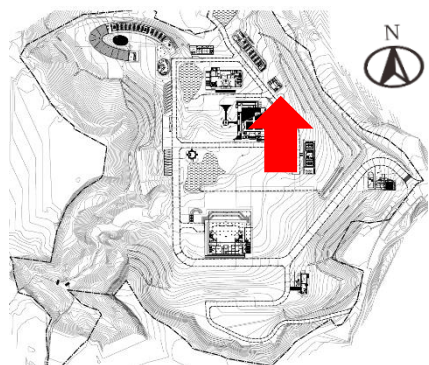


男義工1F梁版澆置





男常住1F柱牆鋼筋模板水電施作



司機休息室基礎層鋼筋模板水電施作

